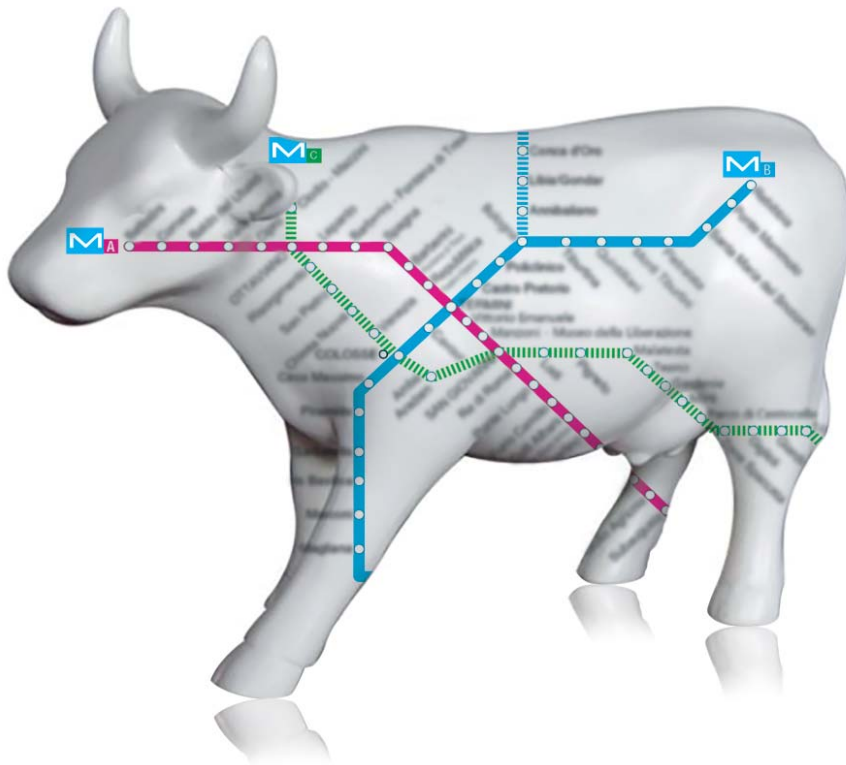


SELECTION GATE

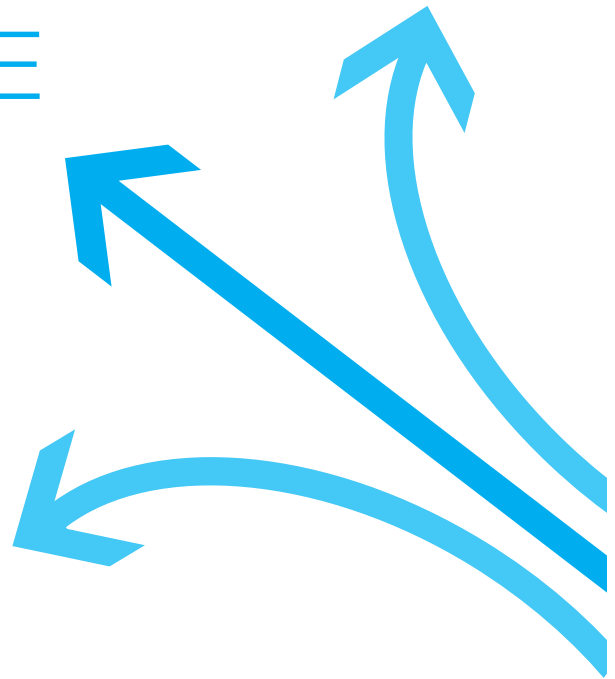
DO YOU WANT A PRODUCTIVE FARM?
TAKE THE RIGHT PATH



MILKLINE®

THE MILKLINE SELECTION GATE

HAS BEEN DESIGNED TO
AUTOMATICALLY SORT
YOUR ANIMALS
EFFICIENTLY,
QUICKLY AND
RELIABLY



For a healthy and productive herd, it is essential to optimise the control and management of single animals or groups of animals that need treatment or special attention. Not wasting precious time researching and sorting these animals is now possible thanks to the [MILKLINE](#) selection gate.

INCREASE
FARM EFFICIENCY
OPTIMISING THE MANAGEMENT
OF SINGLE ANIMAL





THE MILKLINE SELECTION GATE AUTOMATICALLY IDENTIFIES AND SORTS ANIMALS ACCORDING TO SPECIFIC CRITERIA

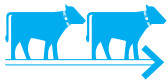
Animals who cross the selection gate are **uniquely identified** thanks to the tags mounted on the collar and are separated into 2 or 3 different pens based on the pre-defined selection criteria.

The **MILKLINE** selection gate can be installed at milking parlour exits or in any other animal transit area.

FEATURES



Integration with **DataFlow™ II** herd management software



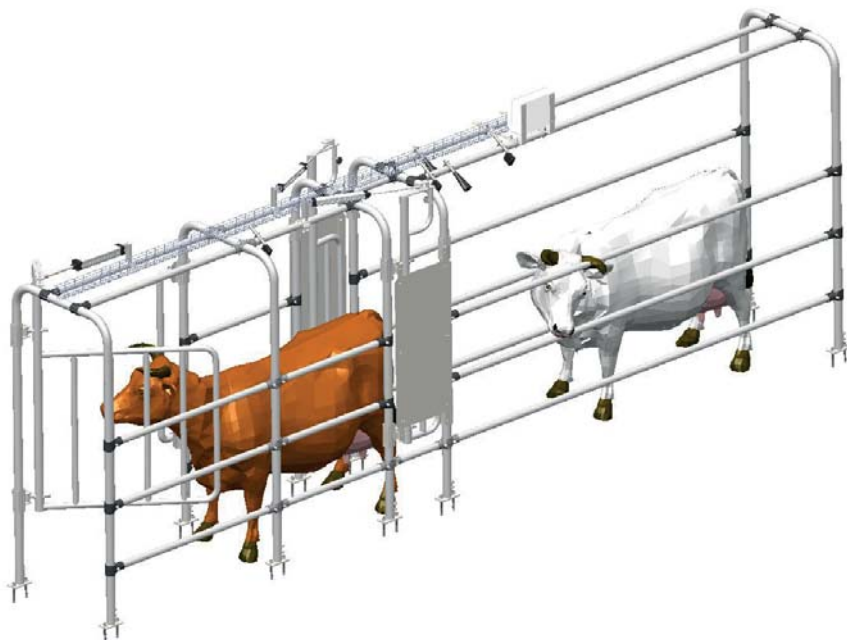
Layout designed to maximise animal flow

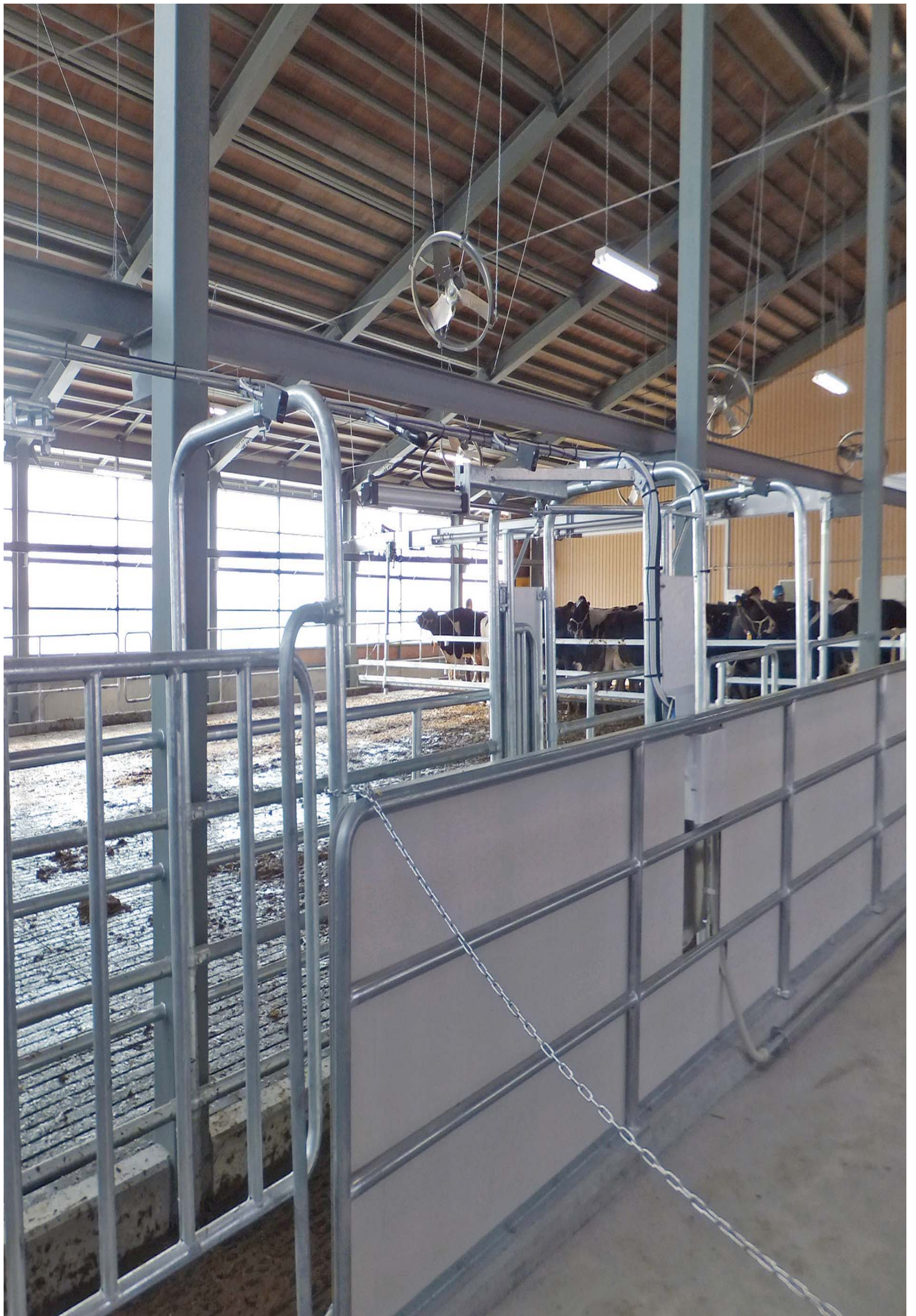


Reliable, quiet electro-pneumatic controls



Real time information updates





HOW TO USE



MANUAL MODE

The selection gate can be controlled manually thanks to the control box installed close the gate



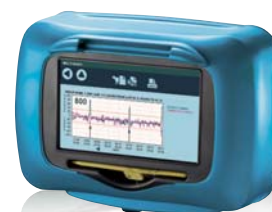
AUTOMATIC MODE

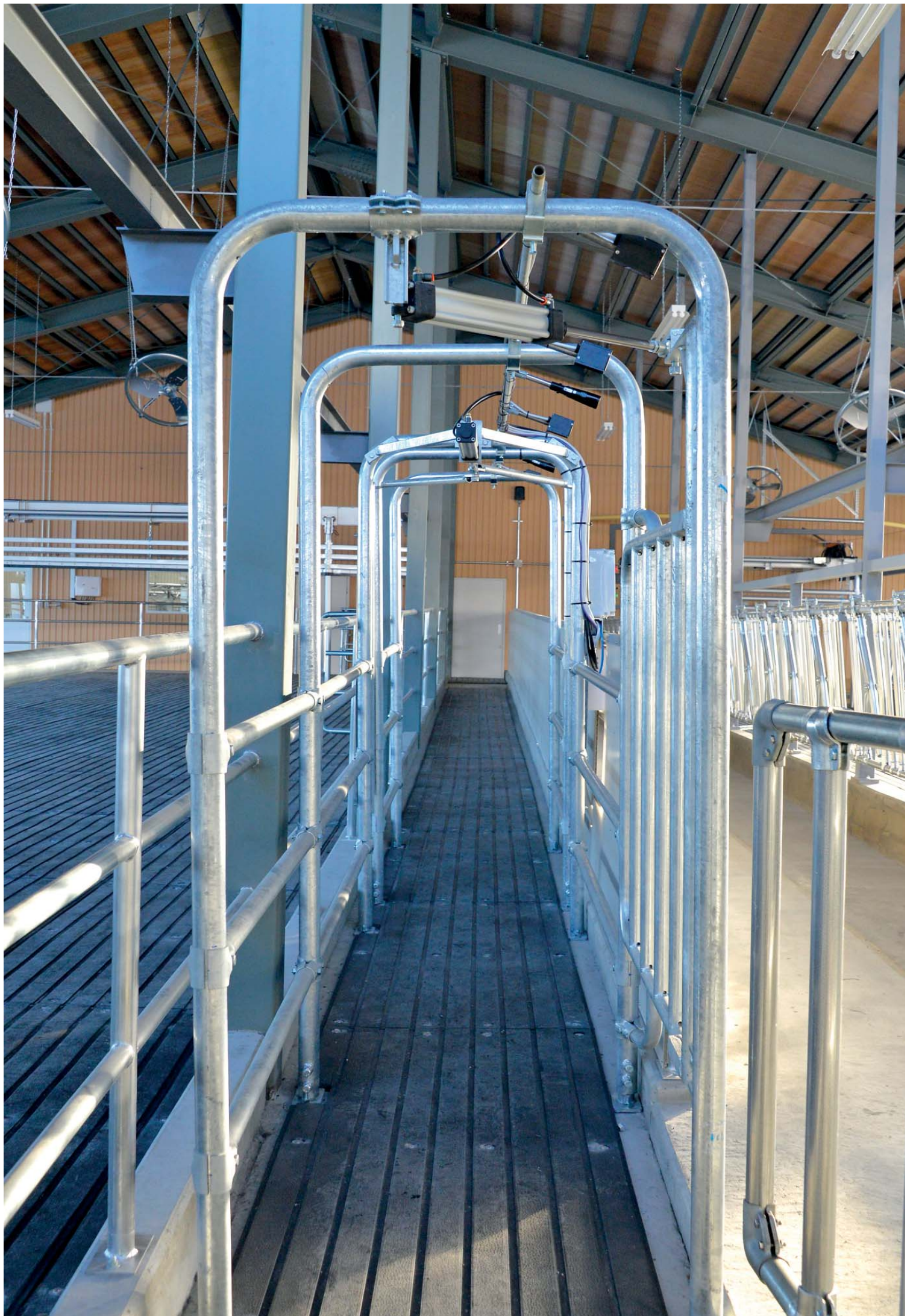
It can be controlled in automatic mode in combination with **DataFlow™ II** herd management software, which automatically establishes if an animal has to be sorted depending on pre-set and programmable criteria. All selection gate functions can be set easily and intuitively via software.

With **DataFlow™ II**, it is possible to plan different sorting strategies according to specific needs:

- + **automatic separation based on pre-set reports** - for example animals in heat to be inseminated, cows with health alerts, groups of animals within the same herd that should be directed into different pens
- + **automatic separation based on lists created by users** - for example animals requiring routine or special veterinary checks
- + **automatic separation at precise times of the day and/or week** - for example after the morning milking or on pre-scheduled days of the week for routine operations.

If the Milcline milking parlour is connected to **DataFlow™ II**, users can decide to sort the animal directly by using the pushbutton of the milking point or by the DataTerminal touch screen.





Why choose **MILKLINE** SELECTION GATE



REDUCED DAILY WORKLOAD:

animals are sorted automatically into special areas



INCREASED EFFICIENCY:

treatments, separations, inseminations, veterinarian checks can be carried out quickly



MAXIMUM PRECISION:

fast, effective sorting



OPERATING SIMPLICITY:

sorting operations do not interfere with the normal animal traffic



ANIMAL WELFARE:

layout especially designed to avoid stress to the animals during sorting operations



IDENTIFICATION:

Automatic identification of the animals



MILKLINE®

Le informazioni contenute in questo opuscolo non sono impegnative e possono essere soggette a modifica senza alcun preavviso.
© Milkline 2016. DEP16111EN

MILKLINE®

Via Mattei, 4 - Loc. Gariga - 29027 Podenzano (PC) - Italy
Tel. +39 0523 524245 - Fax. +39 0523 524242 - www.milkline.com